



2310 E. Orangethorpe Ave, Anaheim, CA 92806

714-738-6194 / 714-446-0119 FAX

www.accrmfg.com

Series G5225 - Product Specification

Part Number Code:

G5225 MVW BA - X.XX H L R

ACCR Series

Hardware Option:

Standard = 3/32" Hex Socket Head Screw with 4-40 Threads
 M = Metric 2.5 Hex Socket Head on screw (3/32" Hex Socket Std)
 V = Visual Lock Indicator (add .20" to screw length)
 W = Lock and Flat Washer (add .100" to screw length)

Finish Option:

BA = Black Anodize per Mil-A-8625, Type II, Class 2
 BH = Black Hard Anodize per Mil-A-8625, Type III, Class 2
 CC = Chem-Film Clear per Mil-C-5541, ROHS
 CG = Chem-Film Gold per Mil-C-5541
 EN = Electroless Nickel per Mil-C-26074, Gr. B, Cl4
 BL = Black Hard Anodize with Dry Film Lube per Mil-L46010

Option R = Locknut for retaining the screw

Option L = Locking Element on screw threads

Mounting Options:

H = C'bore .156" Dia. X .200" Deep X .068/.073" Dia.
 Thru Hole, CSK 100 Degree X .140" Dia.

T0 = 0-80 Tapped Thru Holes

T2 = 2-56 Tapped Thru Holes

TM2 = Metric 2 Tapped Thru Holes

TM2.5 = Metric 2.5 Tapped Thru Holes

Assembly Length in decimal inches:

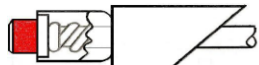
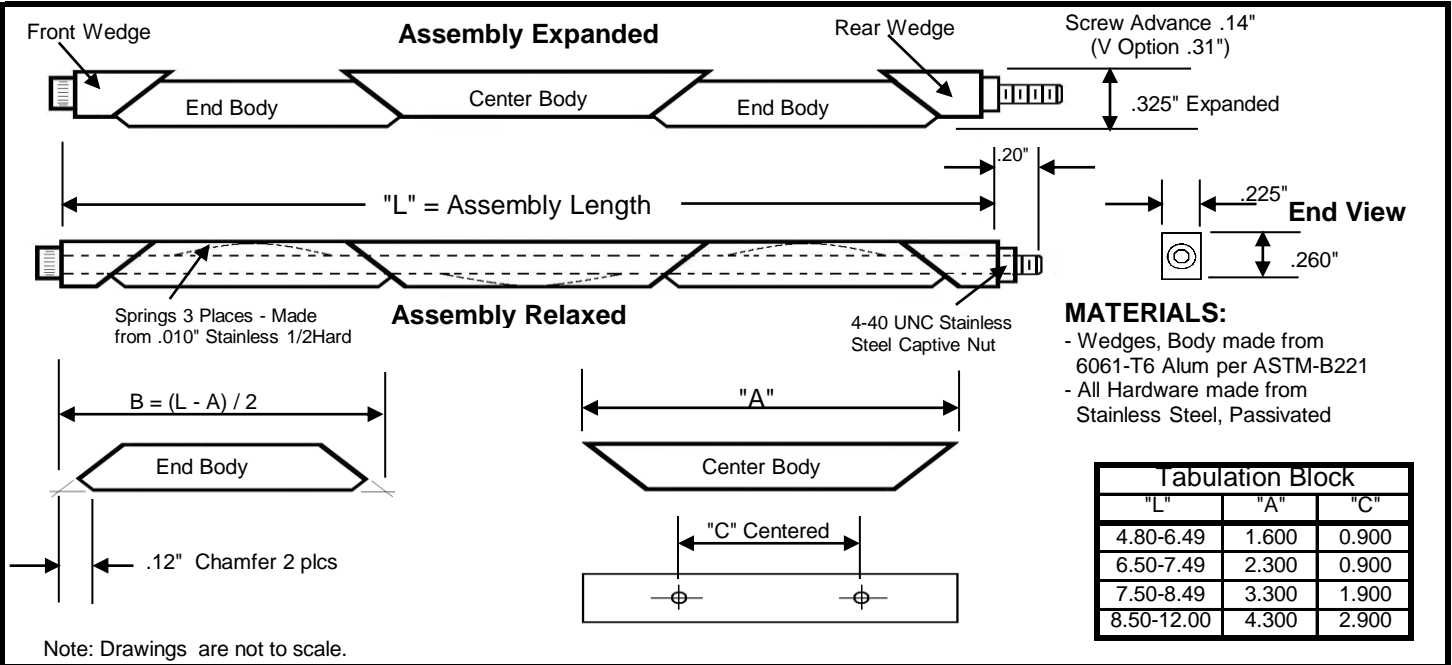
Standard lengths = 4.80, 6.50, 7.50 and 8.50

Other lengths or specifications on request.

NOTE: 100% Made in the USA

NOTE: 100% Made in the USA

NOTE: 100% Made in the USA



UNLOCKED

Red head of screw exposed.



LOCKED

Red head concealed inside cup. (adds .20" to length of screw)



Locking Element applied to screw threads increases prevailing torque for added resistance to shock and vibration to insure retainer remains secure.



Stainless steel locknut (MS21043-04) installed to prevent unintentional disassembly of the rear wedge when the retainer is relaxed. (add .100" to length of screw)

"V" Option:

Provides color code on the screw head as a visual indicator the retainer is locked.

"L" Option:

Adds Lock Patch to screw threads for additional resistance to shock and vibration.

"R" Option:

Add MS21043 Lock Nut to prevent unintentional disassembly of rear wedge.