



2310 E. Orangethorpe Ave, Anaheim, CA 92806

714-738-6194 / 714-446-0119 FAX

www.accrmf.com

Series G5220 - Product Specification

Part Number Code:

G5220 MVW BA - X.XX H L R

ACCR Series

Option R = Locknut for retaining the screw

Hardware Option:

Standard = 3/32" Hex Socket Head Screw with 4-40 Threads

M = Metric 2.5 Hex Socket Head on screw (3/32" Hex Socket Std)

V = Visual Lock Indicator (add .20" to screw length)

W = Lock and Flat Washer (add .10" to screw length)

Option L = Locking Element on screw threads

Mounting Options:

H = C'bore .156" Dia. X .200" Deep X .068/.073" Dia.

Thru Hole, CSK 100 Degree X .140" Dia.

T0 = 0-80 Tapped Thru Holes

T2 = 2-56 Tapped Thru Holes

TM2 = Metric 2 Tapped Thru Holes

TM2.5 = Metric 2.5 Tapped Thru Holes

Assembly Length in decimal inches:

Standard lengths = 4.80, 6.50, 7.50 and 8.50

Other lengths or specifications on request.

Finish Option:

BA = Black Anodize per Mil-A-8625, Type II, Class 2

BH = Black Hard Anodize per Mil-A-8625, Type III, Class 2

CC = Chem-Film Clear per Mil-C-5541, ROHs

CG = Chem-Film Gold per Mil-C-5541

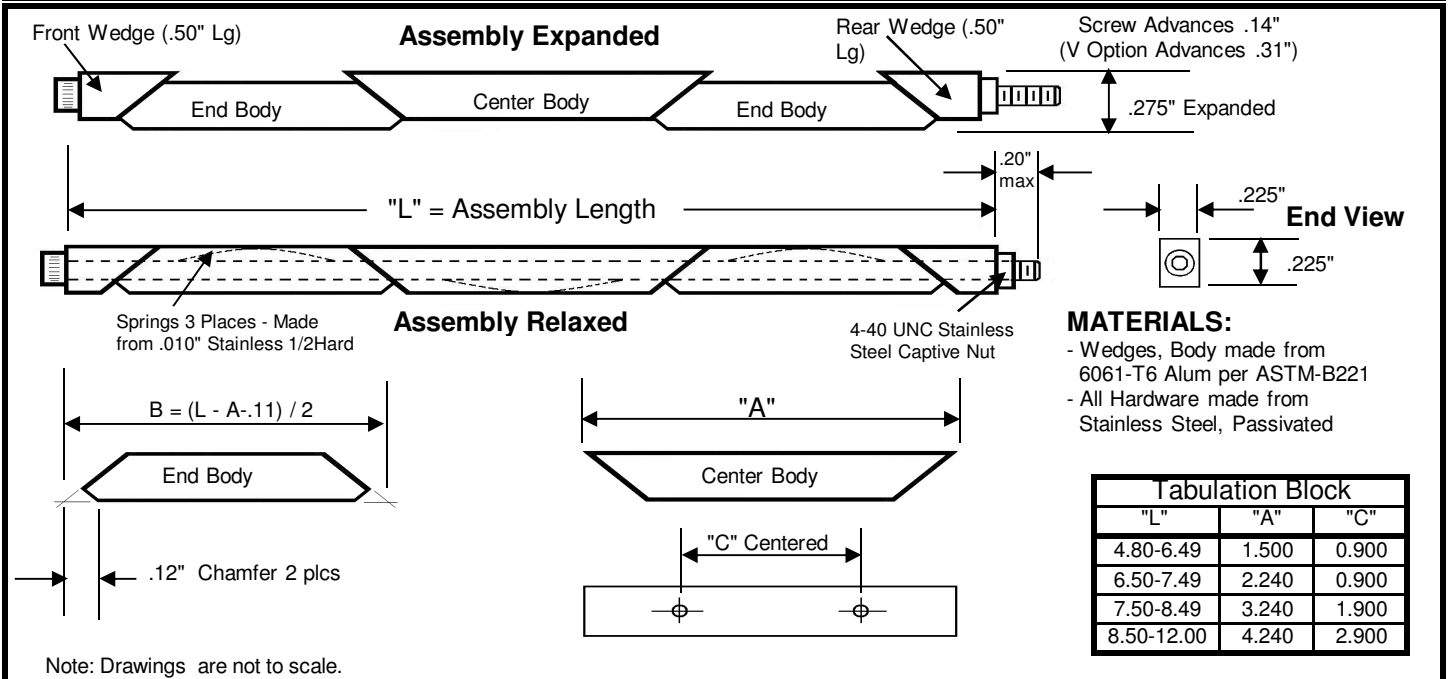
EN = Electroless Nickel per Mil-C-26074, Gr. B, Cl4

DL = Dry Film Lube per Mil-L-46010

NOTE: 100% Made in the USA

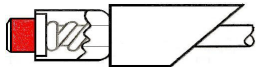
NOTE: 100% Made in the USA

NOTE: 100% Made in the USA



MATERIALS:

- Wedges, Body made from 6061-T6 Alum per ASTM-B221
- All Hardware made from Stainless Steel, Passivated



UNLOCKED

Red head of screw exposed.



LOCKED

Red head concealed inside cup. (adds .20" to length of screw)



Locking Element applied to screw threads increases prevailing torque for added resistance to shock and vibration to insure retainer remains secure.



Stainless steel locknut (MS21043-04) installed to prevent unintentional disassembly of the rear wedge when the retainer is relaxed. (add .100" to length of screw)

"V" Option:

Provides color code on the screw head as a visual indicator the retainer is locked.

"L" Option:

Adds Lock Patch to screw threads for additional resistance to shock and vibration.

"R" Option:

Add MS21043 Lock Nut to prevent unintentional disassembly of rear wedge.