



2310 E. Orangethorpe Ave, Anaheim, CA 92806

714-738-6194 / 714-446-0119 FAX

www.accrmf.com

## Series 5260L - Product Specification

### Part Number Code:

**5260L - X.XX - T2 - 1 P**

#### ACCR Series - Lever Actuated

L = Standard 3/32 Hex Drive Socket Head Adjusting Screw  
LM = Metric 2.5mm Hex Drive Socket Head Adjusting Screw

#### Length in decimal inches:

Standard Lengths = 2.80, 3.80 and 4.80  
Other lengths to your specifications are available

#### Standard Configuration Data

L	A	B	C	Weight
2.80	.900	.450	3.84	.40 oz
3.80	1.900	.950	4.84	.48 oz
4.80	2.900	1.450	5.84	.56 oz
5.80	3.900	1.950	6.84	.64 oz
6.80	4.900	2.450	7.84	.72 oz

#### Adjustment Procedure:

1. Attach the retainer to circuit board and insert into the required slot/channel on cold plate.
2. Expand the retainer with lever and tighten screw until wedges make slight contact with the slot/channel of the cold plate. A slight drag between the retainer and cold plate slot/channel can be detected.
3. Tighten screw 2 additional turns. The Retainer is now adjusted and ready to use.

**NOTE: Setting is approximately 125 lbs force. Do Not Exceed 2 Full Turns!**

#### Pre-set Clamping Force (125 lbs +/- 5 at .300" slot)

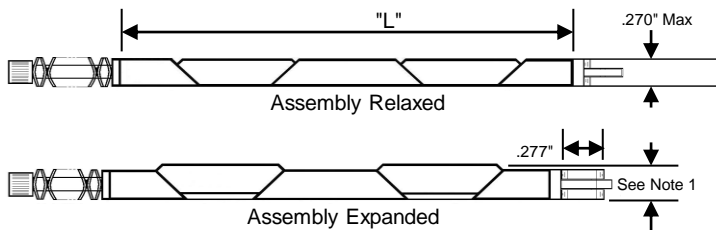
Blank = Retainer furnished unadjusted (see adjustment procedure)  
Other clamping forces and slots to your specifications are available

#### Direction of Lever (See View Below)

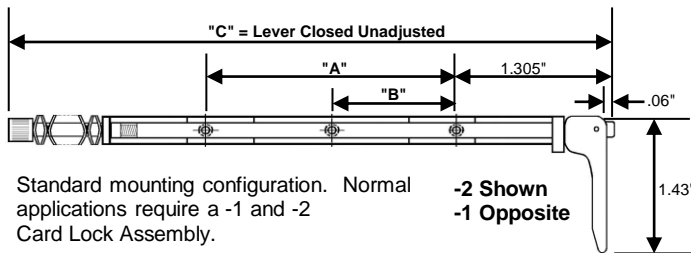
-2 Shown, -1 Opposite

#### Mounting Options:

T2 = 2-56 Tapped Thru Holes  
TM2 = Metric 2mm Tapped Thru Holes  
TM2.5 = Metric 2.5mm Tapped Thru Holes



NOTE 1: Expansion Range = .270" to .325". Adjustment is required. See Adjustment Procedure or Factory Can Preset to Specifications.



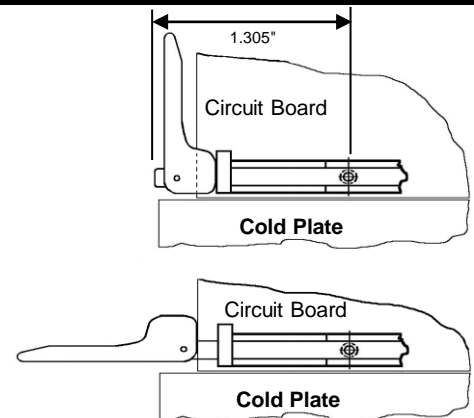
Standard mounting configuration. Normal applications require a -1 and -2 Card Lock Assembly.

**-2 Shown  
-1 Opposite**

#### Materials and Finishes:

- Bodies, Wedges, Shaft and Lever are 6061-T6 Aluminum Alloy per ASTM-B221, Black Anodize per Mil-A-8625 T2, Cl2 except Lever T3, Cl2. Bodies and Wedges have Dry Film Lube per Mil-L-46010 Type 1.
- Adjusting Screw and Spring Retainer are Stainless Steel per ASTM-A582 or QQ-S-763, passivated per Mil-S-5002, locking element per MIL-F-18240.
- Front Washer is Stainless Steel per MPIF Standard 35.
- Rear Washer is Stainless Steel per ASTM-A240 and Spring Washers are Stainless Steel per ASTM-A266, both are passivated per Mil-S-5002.
- **All ACCR products are made in the USA.**

Note: Drawings are not to scale.



#### Features:

- Clamping force pre-set or adjusted as needed.
- Body and Wedge are automatically aligned.
- Lever provides visual indicator of locked status.
- Consistent and evenly distributed clamping force.
- Other lengths, finishes and options available on request.